

Honoring a Legacy, Shaping the Future

Campaign to Expand the
Harold Alfond Center for Cancer Care

The Case for Giving





Harold Alfond Center for Cancer Care



Most of us will have someone we know or family members who are challenged by a cancer diagnosis. I know this – it hit my family, too. I was so thankful I could bring my family to the Harold Alfond Center for Cancer Care for treatment and care.

People like you financially supported the construction of this center and have continued your support year in and year out since we opened – and we are so thankful.

Our data show **the need for cancer services in our community is growing**, and it is demanding. All of us at the Harold Alfond Center for Cancer Care want to continue to be here and provide for all of you.

We now ask you to make a charitable investment in the future by giving to support the expansion of the Harold Alfond Center for Cancer Care.

Debbie Bowden

Debbie Bowden
Administrative Director
Harold Alfond Center for Cancer Care

Honoring a Legacy, Shaping the Future

MaineGeneral Medical Center seeks \$30 million to expand the Harold Alfond Center for Cancer Care, and thereby continue to save the lives of people in Maine, lower the death rate from cancer in the Kennebec Valley and beyond, and enhance the health of our patients, our families and our communities.



Honoring a *Legacy*

If you could go anywhere for state-of-the-art cancer care, where would you go?

When philanthropist Harold Alfond needed cancer treatment, he chose to stay in Central Maine and receive his care from MaineGeneral.

I could have been treated anywhere in the world, but I wanted to be close by and knew the care I would receive at MaineGeneral is comparable to anywhere else. **I hope that cancer never touches you or your family, but if it does, trust me, you'll want the best.**

Harold's experience and transformative vision of a world-class cancer center in Augusta launched a community-wide fundraising campaign to build the Harold Alfond Center for Cancer Care.

More than 2,100 people generously responded to the call. Together, they not only fashioned the LEED-certified building that opened in 2007, they also **forged a lasting legacy of connection and care for each other and for our region's cancer community.**



Promises Made, *Promises Kept*



One in three Mainers will face a cancer diagnosis in their lifetime.

You, your family, your friends and your neighbors need access to local cancer care today and in the future.

When the Harold Alfond Center for Cancer Care (HACCC) doors first opened in 2007, we promised you, our community, to uphold Harold Alfond's vision of a local, holistic center for cancer care where the patient always comes first.

Patients are referred from all of Maine's sixteen counties, but the majority of our patients are residents of Kennebec and Somerset Counties. There are other Maine cancer centers, but the Harold Alfond Center for Cancer Care is the only one centrally located to serve this region.

We pride ourselves on providing the highest-quality cancer care close to home – just like Harold Alfond envisioned, and just like we promised.

Cancer affected my family – a nephew, a grandmother, an uncle – and my daughter is a thyroid cancer survivor. I am proud to be part of the Harold Alfond Center for Cancer Care and part of our patients' journeys, to help them through this, be there for support and keep them close to home.

– Kellie Foye,
HACCC Medical Assistant



The Harold Alfond Center for Cancer Care's mission is to save the lives of people in Maine and lower the death rate from cancer in the Kennebec Valley and beyond.

Every year in Maine,

more than **9,000** adults are diagnosed with cancer

and more than **3,000** Mainers die from the disease.

Every year in the Kennebec Valley,

more than **2,000** new patients walk through the center's doors.

Every day at the Harold Alfond Center for Cancer Care,

each patient's **journey** is supported by more than **100** staff and clinicians.

Every moment

each patient has

with loved ones



The Harold Alfond Center for Cancer Care carries patients through their entire cancer journey. Our person-centered approach includes:

- Care teams that include medical and radiation oncologists, oncology nurses, licensed clinical social workers, community resource navigators, dietitians and oncology pharmacists;
- An Open Access Clinic dedicated to same-day acute care, helping our immunocompromised patients avoid the Emergency Department;
- Clinical trials, targeted therapies and novel technologies through on-site collaboration with the Maine Cancer Genomics Initiative of the Jackson Laboratory;
- An array of social services including financial counseling, cancer survivorship resources, care management and dietary counseling;
- Hematology services to care for our population of patients with blood disorders;
- Telemedicine options to reduce the burden of travel on patients; and
- Prevention, screenings and patient education to promote early detection and increase survivorship.



Cancer hits you close to home. It could be you or your loved one or your friend. **We need to make sure we have everything we need close to home** to give us the best chance of — not just surviving — **but thriving through our cancer journey.**

— Julia Ellis,
breast cancer survivor, age 32

is *Priceless.*

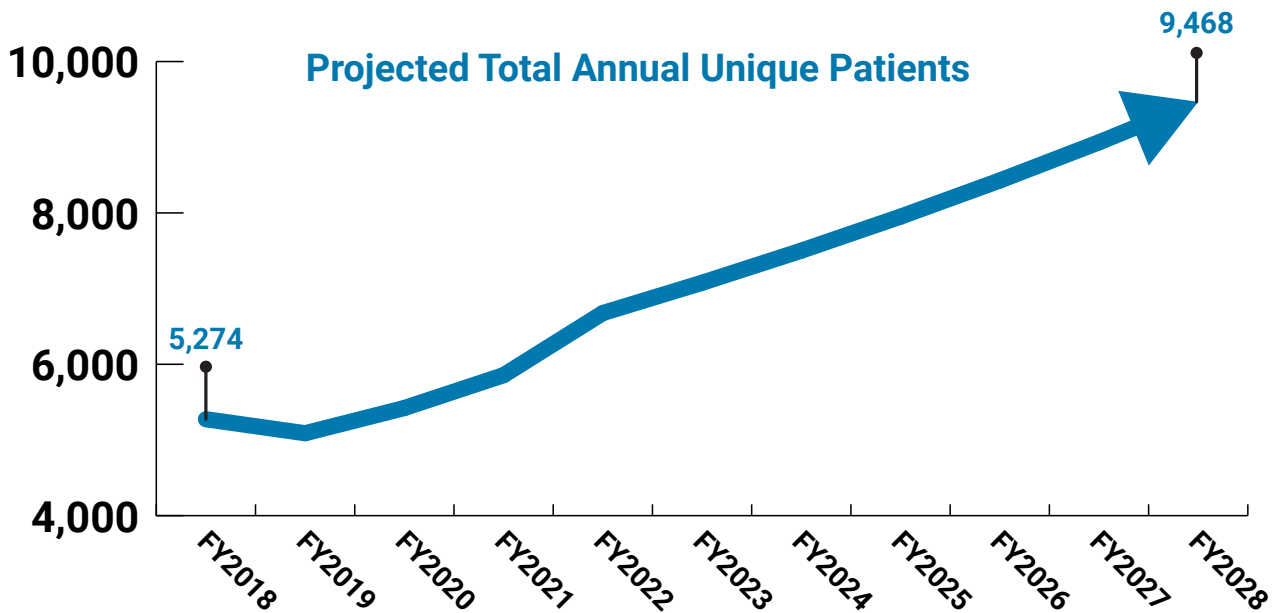
The Harold Alfond Center for Cancer Care was built with growth in mind – and we have grown.

Fifteen years ago, the Harold Alfond Center for Cancer Care was caring for approximately 800 new cancer patients annually. **Today, we care for more than 2,000 new patients every year – two and a half times the capacity the building was built to accommodate.**

New cancer patient consults increased by **74.7%** between 2018-2021



Patient numbers are projected to continue increasing over the next five years.



Why is demand for cancer care increasing?

- Advancements in screening and imaging technologies are detecting and diagnosing cancers earlier.
- Patients are in treatment longer thanks to improvements in targeted genomic and genetic therapies.
- Clinical partnerships with Franklin Memorial Hospital in Farmington and Redington-Fairview General Hospital in Skowhegan allow us to serve more cancer patients from these rural communities through coordinated care with their local clinicians.



To meet the growing needs of our patients, we have reconfigured and filled every inch of our beautiful facility to care for our patients.

- Offices have been turned into exam rooms to care for more patients.
- In 2007 when the center was built, we had three medical oncology physicians and one Advanced Practice Provider (APP). Now, we have six medical oncology physicians and seven APPs. Clinicians are working out of storage areas that were converted into makeshift offices.
- Due to these accommodations, patient exam rooms are no longer centralized with their clinical teams as they were originally.
- Space for cancer research and clinical trials has been constricted to accommodate increased demand for clinical patient care space.
- Education programming has been altered, with fewer places for patients to gather.

We are at absolute capacity today.

Our current space constraints will not meet our patients' future needs.



Our Vision for *Expansion*

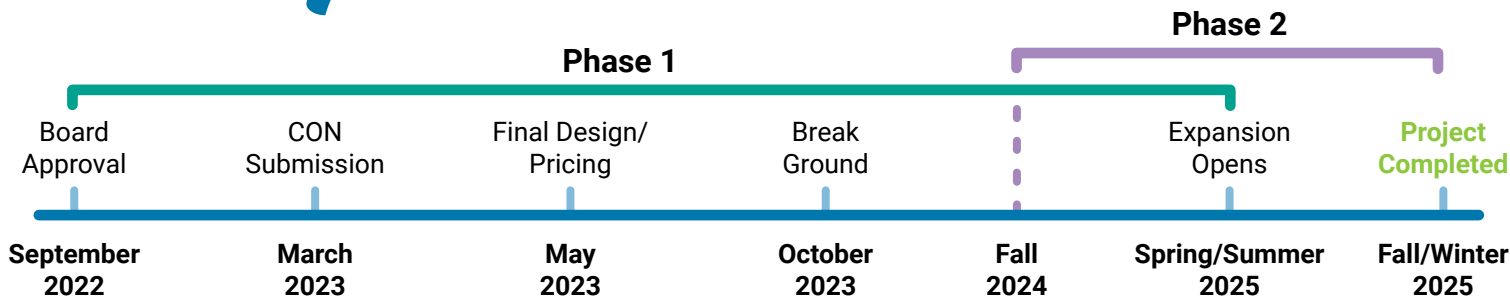
To fulfill our promises and keep patients first, the Harold Alfond Center for Cancer Care must expand.



The proposed \$36 million expansion will:

- Upgrade patient experience and lower wait times by increasing the number of exam rooms from 15 to 27 and the number of infusion bays from 34 to 44;
- Facilitate centralized multi-disciplinary care by grouping all exam rooms in pods with dedicated clinical offices;
- Enhance quality of life for cancer survivors through an integrated Medical Oncology Home/Survivor Clinic;
- Improve patient flow and use of space by renovating existing space in Radiation Oncology and Genetics and Research;
- Create space to restore and add education and survivorship programs; and
- Accommodate more patients by expanding laboratory and pharmacy services.

Project *Timeline*



Phase 1: Expansion Construction

Phase 1 is scheduled to break ground in October 2023 and includes 28,000 square feet of new construction.

Phase 2: Renovation of existing spaces

(Expansions and enhancements of Pharmacy, Lab, Radiation Oncology, Genetics and Research)

Phase 2 of the project will begin when the shell of the expansion is completed in Fall 2024. This overlap will allow patient care to continue uninterrupted and minimize the impact of construction on staff and patient flow.

Economic and Environmental Impact

The cancer center's expansion will have a positive community, economic and environmental impact.

This project will:

- Create jobs in construction and health care;
- Improve the recruitment and retention of highly skilled medical staff;
- Reduce travel for patients receiving treatment and their families; and
- Use energy-efficient, sustainable materials that minimize our carbon footprint.

In the past, I have experienced first-hand what it feels like to be turned away for care when you need it the most. I would not wish this for any citizen of Maine. My care at the Harold Alfond Center for Cancer Care has been amazing and exceeded my expectations. Everything I thought I would get in Boston, I got right here in Central Maine. The Harold Alfond Center for Cancer Care is doing incredible work for patients like me and the impact of expanding this level of care cannot be understated.

— *Bonnie Collins, grateful patient*

Project *Cost*

Project estimates

Site work	\$3,477,710
Core/Shell	\$8,082,400
HVAC/Electrical/Plumbing	\$9,668,100
Finishes	\$6,771,790
Total Construction Costs	\$28,000,000
Direct Costs (fees, permitting, outfitting, medical equipment, technology, furniture, etc.)	\$8,000,000
Total Estimated Project Cost	\$36,000,000

Impact on Project Cost

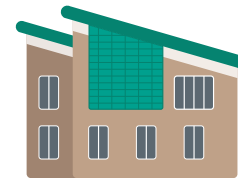
- Inflation has had a major impact on the cost of the project.
- Labor remains costly, with shortages of local workers with the necessary skills. Hiring from further away increases cost.
- Inflation has risen considerably: the cumulative rate from 2005-2023 is 54.5%. Building the cancer center in 2005 cost \$35.2 million. **Today, that same project would cost \$54,401,572.96.**

Anticipated funding sources

MaineGeneral operating cash revenues	\$6,000,000
Fundraising goal	\$30,000,000
Total	\$36,000,000

- Short-term financing will be needed while campaign pledges are paid.
- Patient revenue will support ongoing operational building costs and maintenance.

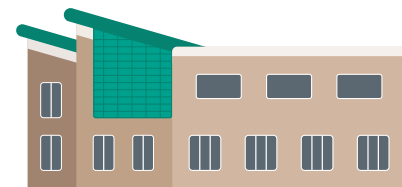
2005



\$35.2M

55,000 sq. ft.

2023



\$36M

28,000 sq. ft.

NEW CONSTRUCTION

18,000 sq. ft.

RENOVATED SPACE

I owe a big thank-you to the Harold Alfond Cancer Center for helping so many people! Without you guys none of this would of happened. I am so proud of my dad for battling cancer. The cancer center has taken such great care of him. My dad is doing really well thanks to The Harold Alfond Cancer center.

— Adele Blackwell, age 10





Shaping the *Future*

The future of cancer care in Central Maine is in your hands.

Expanding the Harold Alfond Center for Cancer Care will help ensure we continue to provide patient-centered, high-quality care for future generations.

This community, including people like you, gave generously to build the Harold Alfond Center for Cancer Care as it stands today.

Will you also make a gift to help us expand it and shape the future?

Special recognition opportunities are available throughout the center and its grounds.

Investing in the future of the Harold Alfond Center for Cancer Care is also a way to thank the clinicians and staff who have made a difference in your life and the lives of your family, friends and neighbors.

Your generosity will leave a legacy for years to come. Please give today.

Learn more about the expansion and ways to give:

Nicole McSweeney
MaineGeneral Health
Chief Marketing and Philanthropy Officer
nicole.mcsweeney@mainegeneral.org
207-626-1965

Cancer is a you-and-me disease. It could be any of us tomorrow. Think of how much you or I would want to be supported in that time of need. You can help. We all can help.

— *Dr. Richard Polkinghorn,
Medical Director
and Medical Oncologist*



MaineGeneral
Harold Alfond Center
for Cancer Care

